

CHATHAM PRIMARY SCHOOL

NEWSLETTER

ISSUE 4 – 11 MARCH 2022
BE SAFE BE FAIR BE KIND

ADDRESS: WEYBRIDGE STREET, SURREY HILLS 3127

TELEPHONE: (03) 9830 1933

EMAIL: CHATHAM.PS@EDUCATION.VIC.GOV.AU

WEBSITE: WWW.CHATHAMP.S.VIC.EDU.AU



Year 4 & 5 Camp – Arrabri Lodge

At the time of writing, we have just returned back from the Year 4 & 5 School Camp at Arrabri Lodge. The Camp is located in idyllic surroundings, in the mountains around East Warburton. This venue provided significant space and variations to enable such wonderful experiences as a giant swing, flying fox, sensory trail, climbing wall, archery, games facility, mini golf, and damper cooking along with a host of other pursuits. This was an exceptional experience for our students which together with Teaching and Education and Support staff, our Assistant Principal and I witnessed over the three days. Part of the purpose of such experiences is to build in students a sense of resilience, responsibility, independence and confidence. For some students this may have represented the first time away from parents for an extended period of time. Whilst it is customary for some students to experience a sense of homesickness on the first night this was soon forgotten as we got into the excitement of the second day. The program provided, along with the accommodation and meals was excellent, and enabled all students to become immersed in all manner of experiences with their friends and classmates.

I am pleased to advise that through good fortune and some expansive COVID safe practices we seemed to experience no positive cases of COVID at the camp. Again, I convey our appreciation for the preparedness of my staff to attend at this time, and for those at school, who juggled a range of timetable changes and arrangements to enable it to happen.

Typically, in any given year we provide Camps for students in Years 4, 5 and 6. Previously we have used Arrabri Lodge for students in Year 4, however given the range and assortment of activities and initiatives activities provided this experience was also deemed well suited for students in Year 5. Our Year 6 students have for many years experienced the wonderful spectacle of Lakewood Park in East Gippsland, which again provides a diversity of adventure and water-based activities.

Whilst our Assistant Principal and myself were at the camp, Mr Zac Barry assumed stewardship of the school and provided some needed operational leadership on a day to day basis. The events of any day at our school are complex and ever changing in term of timetable matters, personnel and timely communications. What is provided below is an article written by Zac Barry about the Mathematics area and in the case of Kirstie Briggs, some of our exciting developments in relation to the Effective Spelling Program. Also included is some information provided by Mr Barry regarding the 2022 Annual Implementation Plan.

The following is provided by our Mathematics Learning Specialist – Mr Zac Barry

Chatham Primary School Mathematics Instructional Model

At Chatham, our staff teach Mathematics using an established instructional model. The purpose of this is to ensure consistency of practice across the school and to have a common understanding, for both staff and students, of the lesson structure. It also benefits our students to have consistent language used by teachers across the school.

Chatham's instructional model for teaching Mathematics is based on the 'primacy-recency effect'. This states that during a lesson we remember best the information which comes first, second best, the information which comes last and least the information which comes in the middle. Therefore, the best teaching times are at the beginning and end of a lesson and the best time for student practise is during the middle of a lesson.

Our lesson structure is as follows:

- ◇ **Number Fluency task (5-10minutes)** – an activity or game to get students thinking mathematically.
- ◇ **Lesson launch (10-15 minutes)** – explicit teaching of the focus area being taught.
- ◇ **Discover** – students practise the focus area being taught through grouped activities. These are a teacher focus group, computer task (usually Essential Assessment or Mathletics tasks) and creative or real-world application. These are all differentiated and to the individual needs of each group and are all on the same focus area.
- ◇ **Summarise/reflection (10-15 minutes)** – This allows students to articulate efficient strategies used during the launch and discover phase to connect prior learning, develop mathematical language and reflect on their learning.

At the beginning of a lesson sequence, the students complete a pre-test. Teachers collect and analyse this data to determine student prior knowledge. Then, the students will complete 3 rotations of differentiated tasks to build on their existing understanding of the topic. At the end of the lesson sequence, students complete a post-test to determine the learning that occurred.

Chatham Annual Implementation Plan 2022

Every four years a school completes a review and creates a School Strategic Plan. This identifies key areas of focus to improve the school over a four-year period and creates long term goals to improve literacy and numeracy within a school. Targets are also set to measure the success of the goal. Key Improvement Strategies are identified to support a school to achieve these goals and meet the targets that are set. The goals and targets are set at a review meeting that involves both Chatham Primary School staff and personnel from the Department of Education and Training North Eastern Victorian Region. Once the document is completed, it is endorsed by the Department of Education and Training and subsequently, the School Council. Our last review was conducted in 2019 and our School Strategic Plan concludes in 2023. At Chatham, our long term goals are:

- To improve literacy outcomes for all students Preparatory to Year 6
- To improve numeracy outcomes for all students Preparatory to Year 6
- Empower students to take a higher level of responsibility for their learning.

Each year, an Annual Implementation Plan is created which drives the work to be completed to help meet the goals set out in the School Strategic Plan. Earlier this year, the Principal, Christopher Cotching, Zac Barry, Kirstie Briggs and Jessica Wilson worked with our Education Improvement Leader, Georgina Kirwan and myself to create our Annual Implementation Plan for 2022. Within this document are the Goals and Key Improvement Strategies set out in the School Strategic Plan. The Annual Implementation Plan provides more specific information on how we will achieve our goals. For each Key Improvement Strategy high level actions are identified to drive progress in each specific area. Outcomes and success indicators are identified so, as a school, we can track our progress towards the 12 month targets that have been set. Specific activities are also listed to help determine the work to be completed by staff. These documents are important in both the long term and day to day running of our school. It is exciting to see the dedication and drive by staff and willingness to work hard to ensure the improvement in outcomes for all our students.

The following is provided by our Literacy Leader – Ms Kirstie Briggs

Effective Spelling

We are excited to have commenced a new inquiry approach to teaching Spelling at Chatham Primary School this year. *Effective Spelling* develops a classroom culture in which learners are curious about words and engaged in the process of becoming effective spellers. Within a word-conscious classroom promoted through this approach, students are actively involved in spelling through a thinking process whereby they notice patterns in words and make connections between them.

Students from across the school have been immersed in exploring 'Big Ideas' focussed on different spelling patterns or foci. They have participated in collaborative learning opportunities whereby they have made new discoveries about words. Students have also been recording their individual observations in their own personal *My Word Noticing Book*. This is a useful tool which students will continue to use to record and reflect on the various spelling foci which they explore throughout the year. This book will also serve as a growing personal reservoir of words that can be revisited and revised. Additionally, each student's *My Word Noticing Book* will be a valuable reference tool for them to use when they are writing and proofreading their work.

After much success, we look forward to continuing implementation of this highly engaging approach to teaching Spelling.

Permission forms and approvals

On Tuesday a Compass communication was forwarded to parents regarding permissions and approvals. This communication requires parents to follow a link and provide electronic approval and permissions for students in relation to such matters as Publishing permissions, Seesaw, Head Lice examinations and Acceptable use of ICT. Again, we would ask that parents complete a submission for each child. We have introduced this approach in 2022 to reduce the amount of paper communication required and for greater efficiency. Again, your support of this matter would be appreciated.

Student Leadership – Year 6

On Friday we were delighted to advise our students of their Leadership positions for 2022. Significantly, every student in Year 6 has a leadership role. In the case of School Captains, Vice Captains and House Captains students nominate, provide a speech to their peers, and then have their peers at Years 5 & 6 vote for them. With other positions students nominate a preferred list of roles they wish to perform. Invariably there is some discussions and compromises that come out of such a process. The Leadership Program provided at our school is exceptional and involves a series of leadership development experiences and the involvement of a number of teaching staff. Again, once we are able to conduct our School Assemblies with more regularity, we look forward to our students performing an active role.

We congratulate these students and note the following for 2022:

School Captains	Class	Japanese Captains	Class	Wellbeing Captains	Class
Harvey Macmillan	6ZB	Chai Joshi	6ZB	Maggie Ko	6ZB
Francisca Lopez Flamengo	6RF	Jasmin Hossack	6ZB	Sophia Zhu	6ZB
Vice Captains		Music Captains		English Captains	
Ralph Balamban	6RF	Hannah Lam	6RF	Afra Eftekhari	6ZB
Lila Hemphill	6RF	Xander Khoury	6RF	Will Allen	6ZB
Corbett House Captain		Art Captains		Mathematics Captains	
Isla Ruffles	6ZB	Finlay Fairfull Smith	6ZB	Finn Lamond-Dobson	6ZB
Oscar Gargano	6ZB	Kieran Talbot	6RF	Ashton Field	6RF
Fenton House Captain		Science Captains			
Matilda Barrett	6ZB	Connor Murphy	6RF	Junior School Councillors	
Jacob Tan	6RF	Mary Kaias	6RF	Ella McPhee	6ZB
				Rose Clayton	6RF
McEvoy House Captain		ICT Captains		Tim McGregor	6RF
Tilly Moran-Wall	6ZB	Will Bain	6RF	Reece Middleton	6ZB
Nicholas Rodda	6RF	Oscar Eisel	6RF	Alex McDonald	6RF
				Ryan Maclean	6ZB
Nugent House Captain		Environment Captains		Jack Oswin	6ZB
Alicia O'Brien	6ZB	Jack Gangell	6RF		
Murdoch Lynch	6ZB	Oliver McIndoe	6RF		

School Council Matters for 2022

Our first School Council meeting of the new School Council is scheduled for Monday 21st March 2022. At this first meeting we elect our office bearers for 2022, comprising our President of School Council, Vice President and Treasurer. Additionally, we also elect the convenor of each of our six Committees of School Council comprising Buildings and Ground, Communication and School Development, Education, Finance, Fundraising, and Services.

Importantly, at this time, we have a one parent member vacancy on the School Council. If you are interested in joining the School Council, please contact me at the school in person or email at chatham.ps@education.vic.gov.au

Additionally, at the first School Council meeting there is the capacity to appoint two co-opted members to the School Council. These people can be member of the broader school community or be parents. Again, if you are interested in one of these positions, please contact me at the school in person or email at chatham.ps@education.vic.gov.au

The experience of COVID over the last two years has greatly impacted upon the operation and function of our Committees of School Council. As COVID subsides in the coming months we look forward to the work of these Committees resuming. Again, if you have an interest in being involved in these committees, please contact us at the school. In usual circumstances most of these committees meet once per month and in due course, provide recommendations to the School Council.

Chatham Kitchen Garden

We are delighted that works commenced on Wednesday 9th March to build the outdoor classroom structure at the rear of the school. This area is now fenced off and we hope to have the structure completed by the end of this Term. The *Victorian School Building Authority* has appointed *John Lyng and Co* to build this structure. Once this is completed, we anticipate further works to develop the planter boxes and produce to support our work in this area. In time we hope that the produce produced in this precinct will be used for a range of purposes, including foodstuffs for the Chatham Canteen.

Canteen Matters for the remainder of the Term

As communicated our Canteen Manager, Ms Konstantina Halastanis continues to remain on approved leave. Whilst it has not been possible to provide an ongoing replacement with the appropriate, knowledge, skills and capacities we have been able to open the Canteen for the remaining Fridays of Term 1. This represents a wonderful effort, and we are pleased to advise an expansive menu has been provided on QKR. Please see attached with this newsletter a Canteen menu for the remaining Fridays of the Term. I am pleased to advise that together with some volunteers, Ms Belinda Dalton our Parents Club President has provided considerable drive and time to bring this opportunity to fruition.

I will keep you informed in the coming weeks about our plans for the Canteen in Term Two.

Again, we continue to have a great deal occurring in our school

Christopher Cotching
Principal

Diary Dates	
Date	Event
Monday 14 March	<ul style="list-style-type: none">Labour Day Public Holiday
Friday 18 March	<ul style="list-style-type: none">Year 1 Excursion to Scienceworks
Monday 21 March	<ul style="list-style-type: none">Year 6 Leadership Incursion—Values for LifeSchool Council Meeting 7:00pm
Tuesday 22 March	<ul style="list-style-type: none">The Resilience Project - Student Presentations
Wednesday 23 March	<ul style="list-style-type: none">Year 2 Incursion - Silly ScientistThe Resilience Project - Student Presentations
Thursday 24 March	<ul style="list-style-type: none">The Resilience Project - Parent Presentation 6:30—8:00pm
Friday 25 March	<ul style="list-style-type: none">National Ride2School Day
Saturday 2 April	<ul style="list-style-type: none">Prep/Buddy Picnic and Welcome BBQ/Family Movie Night 5:00pm







TRP IN ACTION AT CHATHAM

The implementation of The Resilience Project (TRP) across all year levels is off to a promising start at Chatham. Students have been using their TRP workbooks in the classroom and enjoying weekly age-appropriate, engaging and curriculum-linked sessions, based on the pillars of Gratitude, Empathy, Mindfulness and Emotional Literacy.

Exclusive Seminars with Martin Heppell

As we continue to prioritise student wellbeing and mental health, and implement this evidence-based program, we have some exciting updates and crucial dates for your diaries. Following on from intensive Staff Professional Learning in Term 1, there will be two student seminars on **Tuesday 22 March**. The **Prep - Year 3 session** will run from **10:00am-11:00am** and the **Year 4 - Year 6 session** will be after recess at **11:30am - 12:30pm**, both led by highly sought-after presenter of The Resilience Project, Martin Heppell. Please check Compass in the coming days for the event details and to provide consent and payment for your child.

Parent Seminar - Thursday 24 March

In addition, as we embed the program within our school community and foster a supportive home-school partnership, we are thrilled to announce that Martin Heppell will be running a special once-off **Parent Seminar** at Chatham this month. The seminar will be held on **Thursday 24 March** from **6:00pm-8:30pm** in The Hall. Please keep an eye out for the Compass Announcement, where you can access to the event details and RSVP link. Having presented to adults and students across hundreds of schools in Australia, Martin's enthusiasm and passion for student mental health and wellbeing is infectious. Attending this **FREE** seminar is the perfect opportunity for parents to get involved with the implementation of The Resilience Project at Chatham. **Please RSVP** as soon as possible to reserve your place. It is not to be missed!

What is The Resilience Project?

The evidence-based program is designed by teachers and has been evaluated by The University of Melbourne. Through presentations, student curriculum, teacher resources and digital content, The Resilience Project's Education Programs support mental health in the classroom, staffroom and family home.

The program links with our existing implementation of Rights, Resilience and Respectful Relationships, along with our mindfulness and Circle Time practices, and supports students to develop positive strategies to help them build happiness and resilience. The Resilience Project states:

'The research is clear, the more positive emotion you experience, the more resilient you will be. For that reason, we focus on three key pillars that have been proven to cultivate positive emotion, Gratitude, Empathy and Mindfulness (GEM), with Emotional Literacy being a Foundational skill to practise these strategies'

KONNICHII WA

Welcome to Japanese for 2022. It has been wonderful having the students back in our Japanese classroom, with the room looking more beautiful than ever this year. I was delighted that the theme chosen for the 2021 Year 6 Graduation was Japan and I was most appreciative when the Graduation Committee gifted the event's beautiful decorations to our Japanese program. The students just loved walking into their first lesson to find a freshly decorated room.

Arigatou to our generous 2021 Year 6 families.

The Japanese room and garden is one that our families do not often get to visit so I thought I would include some photos to share with you. With the weather having been so beautiful lately, it has been great having the doors to our beautiful Japanese garden wide open and the students able to spend quiet time out there.

Arigatou from Bradford Sensei 🇯🇵



PARENTS CLUB NEWS

chathamparentsclub@hotmail.com

IT'S BUDDY PICNIC AND MOVIE NIGHT TIME

Hooray! We have an event in the diary, and it's an absolute cracker - mark Saturday, April 2 as busy. Prep and Grade 5 families meet on the oval from 5pm-6pm for their Buddy Picnic and general frivolity. From 6pm the rest of the school can join in for the famed Movie Night. Movie details are TBC, so stay tuned. The buddy picnic is a wonderful Chatham tradition, and the movie night is fast becoming one. Thanks to **Meg Fricke** and **Jane Keoble** for organising the picnic.

WELCOME TO CHATHAM PRIMARY SCHOOL

PREP & GRADE 5 BUDDY PICNIC

SATURDAY 2ND APRIL 2022
5.00PM - 6.00PM

Join us for a picnic on the oval for a big warm Chatham welcome.

From 6pm onwards join us on the Oval for a Movie Night. Everyone is welcome!



PICNIC DETAILS

Prep and Grade 5 families meet on the oval from 5pm-6pm for their Buddy Picnic and general frivolity. From 6pm onwards join us on the Oval for a Movie Night. Everyone is welcome!

For more information, please contact Meg Fricke or Jane Keoble on 0870 240 1234 or email chatham.parents.club@me.com

VOLUNTEER IN THE CANTEEN - YOU KNOW YOU WANT TO

The canteen is back on Fridays for the rest of the term. Volunteers are needed to help Belinda, who has kindly volunteered to get the canteen back up and running. Shifts can be all day (9am-2.15pm) or morning/afternoon (9am-12pm/12pm-2.15pm). It's fun, easy and no experience is needed. Please contact Belinda directly (belindadalton@me.com) if you can help.

THANKS FOR HELPING TO REBOOT THE PARENTS CLUB

Thanks to everyone who came along the wine and cheese evening and who've offered to support the Parents Club events. We can't run events without the help of you fine folk. If you'd like to get involved, drop us a line - it's a great experience, enriches your family's school journey, helps the school and builds community.



UPCOMING EVENTS

**CPC TERM 1 MEETING
FRI MARCH 25
LOCATION TBC**

Grab a coffee and join us from 9.10am-10am at a yet to be determined location for the Term 1 Parents' Club meeting. Everyone is welcome!

BUDDY PICNIC + MOVIE NIGHT

**SAT APRIL 2, 5PM-9PM
ON THE SCHOOL OVAL**
Prep and Grade 5 Buddy Picnic followed by the whole school Movie Night.



Like

'Chatham Primary
Parents Club'

Our fb group is a great way to stay connected. Please join/add current parents if you haven't already.

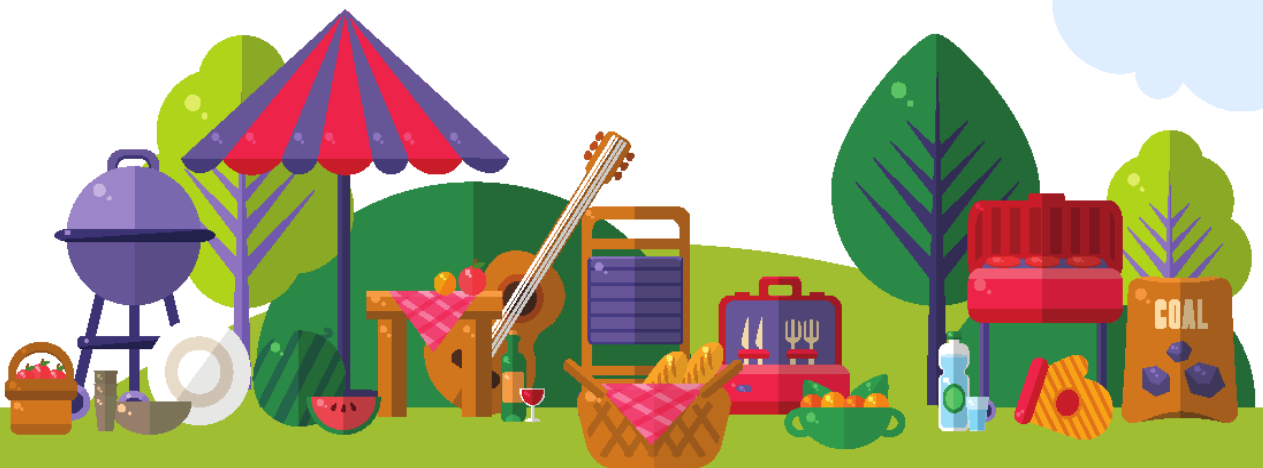
Welcome to Chatham Primary School

PREP & GRADE 5 BUDDY PICNIC

SATURDAY 2ND APRIL 2022
5.00PM - 6.00PM

Join us for a picnic on the oval
for a big warm Chatham welcome.

This event will be followed by the
Chatham Family Movie night from 6pm-9pm.



PICNIC DETAILS

BYO Picnic Rug, picnic food & drinks for your family.
Plus hats, sunscreen and some games for the kids if desired.

Any questions please contact;

Meg Fricke (Grade 5, 0448 883 443)

or Jane Keeble (Prep, 0409 470 552)

or via the year level What's App.

This event may be cancelled due to inclement weather or COVID19.
If so, notifications will be sent out via Year Level What's App Groups.



CHATHAM CANTEEN MENU

TERM 1 2022

PLACE ALL ORDERS ON QKR! BY 9AM THURSDAY FOR FRIDAY CANTEEN SERVICE

Snacks

Piece of Fruit - apple	\$1.20
Piece of Fruit - banana	\$1.20
Vegetable Sticks ; cucumber & carrot	\$2.00
Wholegrain Rice Crackers	\$1.00
Cheese & Wholegrain Rice Crackers	\$3.00
Hommus Dip	\$1.40
Fruit Toast: 2 slices	\$2.00
Ginger Teddy	\$2.50
Popcorn	\$2.00
Banana Bread	\$3.00
Yoghurt Squeeze:	\$2.50
Strawberry	
Bananarama Smoothie	\$5.00

Drinks

100% Fruit Juice :	
Just Juice	
- Apple	\$2.50
- Orange	\$2.00
- Apple & Blackcurrant	\$2.50



Lunch

Sushi

Chicken Sushi	\$3.50
Tuna Sushi	\$3.50
Vegetarian Sushi	\$3.50
Avocado Sushi	\$3.50

Hot Food

Spiral Pasta & Tomato Sauce	\$5.00
Spiral Pasta & Tomato Sauce with Cheese	\$5.50
Sausage Rolls (party size)	\$2.00
Hot Potato Wedges	\$4.00

Sandwiches

On Wholemeal Bread

Vegemite	\$2.50
Cheese	\$3.00
Cheese & Vegemite	\$3.50
Ham	\$3.50
Ham & Cheese	\$4.00
Cheese & Tomato	\$4.00
Ham, Cheese & Tomato	\$4.50

Toasted Sandwiches

On Wholemeal Bread

Cheese	\$3.00
Cheese & Vegemite	\$3.50
Ham	\$3.50
Ham & Cheese	\$4.00
Cheese & Tomato	\$4.00
Ham, Cheese & Tomato	\$4.50



CHATHAM CANTEEN MENU

TERM 1 2022

PLACE ALL ORDERS ON QKR! BY 9AM THURSDAY FOR FRIDAY CANTEEN SERVICE

Wraps

Salad	\$5.00
Cheese & Salad	\$5.50
Chicken, Lettuce & Mayo	\$6.50

Sauces

Tomato Sauce	\$0.40
Soy Sauce	\$0.40
Mayonnaise	\$0.40
Aioli	\$0.40



Frozen Desserts

Icy poles	\$1.50
99% fruit juice Berry Quelch	\$1.20
Frosty Fruits - Tropical	\$2.00
Frosty Fruits - Watermelon	\$2.00
Frozen Yoghurt - Strawberry	\$2.80
Frozen Yoghurt - Wild Berry	\$2.80
Frozen Yoghurt - Mango	\$2.80

Chatham Canteen classifies food and drink on the menu as **Everyday (Green)**, **Select Carefully (Amber)** and **Occasionally (Red)** based on their nutritional content.

The Emergence of Tuned In Kids (TIK) at Chatham

Uke4Kids is rebranding to Tuned In Kids - and we are so excited! We hope to have our new website up and running in the next few weeks. It is yet to go live, so you can't go there just yet you eager wombats!

<https://www.uke4kids.com.au> is still the go to for information for now.

Tuned In Kids' purpose is nurturing a creative future - supporting kids to thrive now and as they grow through fostering resilience.

Our young people face an ever more complex future, as well as present, and strong resilience skills are vital.

We engage, support and extend kids through teaching kids HOW to be curious, calm, confident, connected and creative. We call this the 5Cs.

The 5Cs are operationalised through our "Get Awesome Learning Framework"- a highly systemised and structured program, with a personalised delivery for each child.

Music continues to be our platform. Learning how to play an instrument offers a super charged learning space for kids for much more than just music. Additional ways to resilience will be added as we grow.

Instruments offered:

Ukulele is still our recommendation as a first instrument, particularly for Early Primary kids - contact us to find out more about why we are such fans of the uke.

Available instruments will include drums, guitar and keyboard along with ukulele. Most kids will need to have a grounding in our uke program before moving to another instrument.

Yanai Morris, music director of U4K/TIK was the drums and guitar teacher at Chatham PS from 2008 to 2012 and brings years of experience in teaching and performing to these instruments.

I'd love to know more!

We welcome enquiries from all parents for whom our approach resonates, and look forward to chatting with you about how we can support your child's learning and wellbeing.

For more information or to contact us go to www.uke4kids.com.au or call Dassana, chief people person on 0418 356 574. We look forward to supporting your own and your child's aspirations.

CHATHAM TEAMKIDS NEWSLETTER



WHAT'S BEEN HAPPENING

WEEK 5

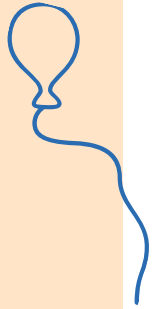
During Week 5 we got party planning for our upcoming Grand opening party and the Rainbow party. As a group we all brainstormed many ideas and are very excited to see which ones will be incorporated to our parties.

This week we continued our around the world culinary trip where we visited China, Spain, Greece, Indonesia and Australia. We enjoyed foods such as smoothie bowls, fried rice and Greek salad.

In Cooking club we put a spin on an Australian classic, by making lamington cupcakes. We had lots of FUN as always.

In Art Attack club this week, the students made pet rocks, their creativity was let loose in an explosion of colour. All the rocks were unique and boasted a wide range of colours and techniques used.

TEAMKIDS CLUBS ASC WEEK: 6



MONDAY

STEM Club

TUESDAY

Epic Games Club

WEDNESDAY

Cooking Club

THURSDAY

PARTY

FRIDAY

LEGO Club

IMPORTANT DATES



TUESDAY 8th MARCH

International Women's Day



THURSDAY 10th MARCH

TK Grand Opening Party ASC



MONDAY 14th MARCH

Labour Day | TeamKids is closed



Service Mobile: 0412147589
Office Phone: 1300 035 000

Service Email: chathamps@teamkids.com.au
Office Email: info@teamkids.com.au

HELLO TERM 1



CHATHAM PRIMARY



Welcome to TeamKids
2022! We have an
EXCITING year planned.
See you soon!

What's on this term...



FEBRUARY

TEDDY BEARS
PICNIC

MARCH

END OF TERM
CELEBRATIONS!

APRIL

AUTUMN SCHOOL
HOLIDAYS

Team
Kids

JOIN OUR
FREE FUN!

LUNCHTIME
LEGENDS

RED LIGHT - GREEN LIGHT
CHUCK THE CHICKEN
DODGEBALL
AND SO MUCH MORE!

NEW TO TEAMKIDS?



WATCH OUR QUICK VIDEO
vimeo.com/638516418

HOW TO REGISTER?

Head to teamkids.com.au/register
Allow 10-15 min to set up your account.



HOW TO BOOK?

1. Sign in to your TeamKids account.
2. Select the following: » Add/change bookings » Care Type » Child's Name » Date (it will turn green).
3. Click "Next".
4. Double check your bookings and click "Confirm Changes".



See you soon!

AWESOME PARTIES
YUMMY SNACKS
HOLIDAY FUN
EPIC EVENTS
FUN CLUBS

BEFORE, AFTER + VACATION CARE
1300 035 000
BOOK IN & PLAY

Team
Kids

SCREEN
FREE FUN

teamkids.com.au | 1300 035 000

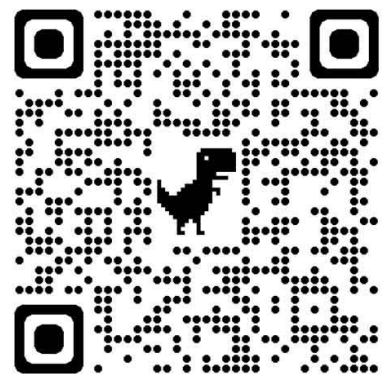
MOBILE 0412 147 589

Kids
Unlimited



Chess Club is BACK!

Wednesday
8:00 - 9:00am
Starts 16th of Feb



**FOR ENROLMENTS AND TRIALS
CONTACT US!**

1300 424 377 | info@kidsunlimited.com.au | kidsunlimited.com.au

Learn Music

here at school

Come and join in the fun of learning to play piano, keyboard, guitar, flute, clarinet, saxophone, violin, drums or trumpet here at Chatham Primary School.

Creative Music for Schools conducts a music program here at school each week.

Small group classes or one-to-one lessons of up to 30 minutes give children an excellent grounding in music where they will learn to read music and play their chosen instrument.

Tuition costs from \$22.50 per lesson and enrolments are now being accepted for limited places in term 1, 2022

Interested parents should contact Swee during office hours on 9818 2333 or via email: swee@creativemusic.com.au

 Creative Music

www.creativemusic.com.au





Chatham Challenges at Chatham Primary School

Dear Parents and Guardians,

Chatham Challenges is a user pays (\$270.60 (\$246 plus GST \$24.60) / term) enrichment program that is offered in your school, in school time, and is available from Year 1 – Year 6. During the 1st term, the Year 1 students, who missed out on their 4th Term Prep Testing, will have the opportunity to qualify for Chatham Challenges, a program working in schools with advanced thinkers and faster learners. This is a free test without any obligation, but which gives parents and guardians further information about their child’s potential. The test administered is the ‘Raven’s Progressive Matrices’ which is a leading global non-verbal measure of mental ability, helping to identify individuals with advanced observation and clear thinking skills. The test, itself, is not related to reading, writing or spelling but to the child’s creative ability. Parents and guardians will be notified if their child has qualified. The test will be administered in a nearby classroom by registered teacher, Educational Consultant and former Principal Pat Truscott who has a working with children’s check.

For further information please contact Pat Truscott Dip Teach., B.Ed., Grad Dip R.E., ACEL, IML., M.A.W.A. Mobile: 0407 313 657, email: patrogers1@bigpond.com. All enquiries are welcome.

All teachers are qualified and faster learners themselves so can mentor with great understanding of this ability.

Some indications:

1. Speaks fluently using advanced levels of words, seems older than his/her age.
2. Has a very good memory for words, songs, poems, stories, signs, places or numbers.
3. Puts ideas together in creative ways, seeing things in a new perspective.
4. Sets very high standards for self and doesn’t like to fail. Maybe has trouble starting things.
5. Refuses to write things down or hand in the required amount of work.
6. Gets into trouble for asking too many questions.
7. Can tell you all about the topic in detail, but can’t present work in written form.
8. Has been assessed as gifted by a psychologist, Krongold, CHIP or school.
9. Thinks and argues well, is independent, self sufficient and may be bossy.
10. Very good co-ordination for dance, sport or gym or technical or craft work.
11. Great interest in the future, world problems, or perhaps dinosaurs or astronomy.
12. Likes to mix with children a couple of years older or with adults.
13. A few of these children have very few or no real friends.
14. Has many friends – is loud and sociable.
15. Is a lovely, well mannered good person who is well balanced and friendly.

The program teaches STEM units plus Art with exciting names.

Science e.g. Astronomy, Expert on Shells; **Technology e.g.** Electronics; **Engineering e.g.** Basic Engineering

Mathematics e.g. Fibonacci Maths and **The Arts e.g.** Draw with A Twist

If you **DO** wish your child to take part in the testing, please complete the form below and return to the school office by Thursday, 3 March, 2022.

✂

I **DO** wish my childDate of Birth Grade
to take part in the testing for Chatham Challenges, which will be held in 1st term at Chatham Primary School.

Signed
(parent/guardian)

Date

BALWYN
COMMUNITY CENTRE



Balwyn Community Centre Cooking Workshops

ITALIAN **EASTER** TREATS COOKING CLASS

Celebrate Easter the Italian way! Learn how to make authentic Italian crostoli with Carmela. This is a hands on workshop. Afterwards, the group will sit and enjoy what they made for morning tea. Class includes take-home recipes.

THURSDAY MARCH 31, 1PM-4PM

COST \$68 PER PERSON

ENROL ONLINE: WWW.BALWYNCC.ORG.AU OR CALL 9836 7942.

FREE HOUSE SPORT ACCESSORY WITH ANY ORDER OVER \$50

JUST ADD A HOUSE BANDANA OR HEADBAND TO YOUR ORDER AND USE THE COUPON CODE:



FREEHOUSEACC



Uniform Shop- Opening Hours

Monday - Friday 9am- 5pm

Saturday 5th March 10am- 2pm

Closed 14th March

Order online or in store for school delivery and Click & Collect

www.surreyclothing.com.au

School Login: CPS Password: CPS

 **Surrey Clothing**

424 Station Street Box Hill 3128
admin@surreyclothing.com.au
98903487



NIMA ROSHAN
Career High:
ATP #199 & AUS #28



GREG JONES
2007 French Open Jr Finalist
Career High:
ATP #179 & AUS #3



**World Class Tennis
in Your
Neighbourhood.**
Come see the Pros
in action!

TOWERS Presents
**1st Annual Canterbury Classic
Pro-Am & Exhibition** Hosted by: 

Sunday April 3rd 12-6pm

Pro-Am starts at 12pm
Come watch your friends partner up with the pros in Doubles Round Robin play

Exhibition matches at 2pm
Get a front row seat to see the pros compete in Singles and Doubles

PRIZES
1-POINT TOURNAMENT
FOOD TRUCK & BBQ
LOCAL HONEY TASTING
BAR SERVICE

TICKETS
General Admission - \$20
Kids under 13 - \$10
Infants under 2 - FREE

PRO-AM - ONLY 8 SPOTS.
\$160pp includes:
2hrs of tennis
Play with & against the pros
Snacks & drinks
Lunch
Ticket to event

To purchase tickets visit Nimatennis.com, scan QR code or contact: Nora@nimatennis.com
Venue: Canterbury TC - 25 Croydon Rd Surrey Hills



SCAN ME

Also Proudly Sponsored by:



What's on Guide

TERM
1
2022

For Children, Teens & Families



DISCOVER, LEARN & CONNECT @ SURREY HILLS NEIGHBOURHOOD CENTRE

 **surrey hills**
NEIGHBOURHOOD CENTRE

Contact Us:
157 Union Road,
Surrey Hills 3127
Ph: 9890 2487
enquiries@surreyhillsc.org.au
www.surreyhillsc.org.au





BALWYN COMMUNITY CENTRE



The Function Centre

The Balwyn Community Centre Function Centre is a venue unlike any other in Boroondara. It is set back from Whitehorse Road, surrounded by peaceful bushland. The main room is a large versatile space, with an outdoor deck area, projector screen, lectern, and audio-visual equipment. Hire includes use of the kitchen, breakout area, foyer, and bathrooms.

If you would like to book a tour of the Function Centre, please call the office. Generally, bookings are in high demand. To avoid missing out, please enquire well in advance.

The Function Centre is suitable for:

- Weddings
- Anniversary events
- Birthday parties (ages 1 and 21+)
- Seminars
- Milestone celebrations
- Large special interest groups
- Health and wellness workshops
- Professional Development Courses

Key features of the Function Centre:

- Carpeted floor
- Large windows and natural light
- Projector, audio-visual equipment, lectern, and microphone
- Commercially equipped kitchen (inc. oven)
- Outdoor, undercover deck area
- Newly refurbished toilet facilities
- Tables and chairs to seat 100 guests

Function Centre hire rates:

Room hire rates for the Function Centre are competitive with other venues in the local area. Rates are charged by the hour, with a minimum 8 hour hire and vary depending on the day and time of the booking. A non-for-profit rate is available. For a quote, please contact the office.

Capacity*:

100 seated, 120 standing

*Capacity is subject to change with COVID restrictions

412 Whitehorse Road,
Surrey Hills 3121

Phone: 9836 7942
recaption@balwyncc.org.au

balwyncc.org.au

BALWYN COMMUNITY CENTRE

412 Whitehorse Road,
Surrey Hills 3121

Phone: 9836 7942
reception@balwyncc.org.au

balwyncc.org.au

Room Hire at Balwyn Community Centre

Balwyn Community Centre is set back from Whitehorse Road, surrounded by peaceful, bushy land. The main building looks out over gumtrees, green grass, and wetlands.

There are several rooms for hire at Balwyn Community Centre including small rooms, medium and large sized multipurpose rooms, a demonstration kitchen, workshop, and art studios. The rooms are spacious and clean, temperature controlled, and feature the latest audio-visual equipment.

Room hire at Balwyn Community Centre is ideal for:

- Health and wellness workshops
- Professional development courses
- Freelancers
- Seminars
- Exercise groups
- Special interest groups and meetups
- Children's activities
- Art classes
- Creative workshops

Rooms for hire:

Meeting Room - Capacity: 6-12 people



The Garden Room - Capacity: 48 people



Kitchen - Capacity: 9-12 people



Multipurpose 1 & 2 - Capacity: 28 people



Craft Workshop - Capacity: 8-14 people



Art Studios 1 and 2 - Capacity: 28 people

